

MONETARY POLICY IN INDIA AND ITS WORKING

A thesis submitted for the fulfillment of the degree of:

MASTERS OF ARTS

IN

ECONOMICS

(International Business)



THAPAR INSTITUTE
OF ENGINEERING & TECHNOLOGY
(Deemed to be University)

Submitted by:

Japji Kaur

(861601003)

Under the guidance of

Dr. Ravi Kiran

Professor In charge of

School of Humanities and Social Sciences

THAPAR INSTITUTE OF ENGINEERING AND TECHNOLOGY

BHADSON ROAD, PATIALA

JUNE, 2018

CERTIFICATE

This is to certify that the work embodied in the thesis entitled “**Monetary Policy in India and Its Working**” being submitted by Japji Kaur, Regn No (861601003) in partial fulfillment of requirements for the award of degree of Master of Arts in Economics (International Business), submitted in **the School of Humanities and Social Sciences, Thapar Institute of Engineering and Technology, Patiala** is a bonafide work carried out under the supervision of Dr. (Ms.) Ravi Kiran, Professor & Former Head, School of Humanities and Social Sciences, & Professor In Charge Alumni Relations, Thapar University, Patiala and that no part of this project has been submitted for the award of any other degree.

(JAPJI KAUR)

This is to certify that the above statement made by my student is correct to the best of my knowledge.



Dr. (Ms.) Ravi Kiran,

Professor & Former Head,

School of Humanities and Social Sciences,

Professor in Charge Alumni Relations,

Thapar Institute of Engineering and Technology, Patiala

ACKNOWLEDGEMENT

I would like to extend my special vote of thanks to my mentor Dr. Ravi Kiran who gave me the golden opportunity to work on this wonderful project within a limited time frame. Special thanks to all the economics teachers for their able guidance and support in completing this project. I am highly beneficial in receiving a lot of knowledge through this project.

My mentor has been really helpful in all the research work from choosing my topic to checking plagiarism each time and helping me in every single task through -out, my special gratitude to her.

ABSTRACT

This study covers the structure and examination of the Monetary Policy in India and how it is practiced by the RBI. The reason for this report is to create among the readers a comprehension of the system and working strategies of the Indian credit and monetary policy. This study would help to recognize the objectives and pointers of monetary policy in India, understand the goals of monetary policy specifically and also appreciate the working system with the help of instruments received by RBI in actualizing monetary policy in India.

This study includes the working of the monetary policy since 1990s, its targets since then, its instruments and the whole of Indian experience with the monetary policy. It analyses the outcomes of the monetary policy from 2010-2017 in the fourth section and the last section covers the conclusion pertaining to the effects of demonetisation.

CHAPTER 1

INTRODUCTION

In the present research there is by all accounts close unanimity that monetary policy is an intense instrument for enhancing the large scale financial position of a nation. Monetary policy is thought to be an important organ of financial policy. Subsequently, the targets of monetary policy all things considered harmonize with the goals of the general financial policy.

A monetary policy target whether middle of the road or last, conveys critical signs to the business sectors, conveys the monetary policy position in unambiguous terms and aides tying down inflationary desires in the economy. Generally, cash supply, bank credit and loan costs were considered as monetary policy targets. Balachandran (1998) proposes that monetary policy is ordinarily comprehended to articulate the strategies, destinations and instruments coordinated towards controlling cash supply.

Monetary policy alludes to the policy of the national bank – i.e. the Reserve Bank of India (RBI) – in issues of interest rates, cash supply and accessibility of credit. It is through the monetary policy, RBI controls inflation in the nation. RBI utilizes different monetary instruments like Repo rate, Reverse Repo rate, Statutory Liquidity Ratio, Cash Reserve Ratio for accomplishing its motives. Monetary policy uses instruments to direct interest rates, cash supply and accessibility of credit. This is precisely done to accomplish a definite target of financial policy and growth perspective of the economy.

The question that is pertinent is how Reserve Bank of India (RBI) monitors through the direct measures. RBI is vested with the main obligation of directing monetary policy. This accountability is vested through the Reserve Bank of India Act, 1934. Next perspective is to understand the primary objective of Monetary Policy of India. Monetary policy is also entitled to maintain the price stability in the economy.

The essential goal of monetary policy is to keep up with the price stability along with the objective of development & growth. Price stability is a fundamental precondition to manage growth & development. To keep up with the price stability, inflation also needs to be tackled and kept in check. The administration of India sets an inflation standard at regular intervals. RBI has an imperative part in the interview procedure with respect to inflation. The present inflation

focusing system in India is adaptable in nature. RBI through monetary policy can play an important role to curb and control inflation. Thus the focus is on Adaptable Inflation Targeting Framework which is covered in section 1.1.

1.1 Adaptable Inflation Targeting Framework (FITF)

Presently there is an adaptable inflation focusing on system in India adopted after 2016 correction to the Reserve Bank of India (RBI) Act, 1934. The changed RBI Act accommodates the inflation focus to be set by the Government of India. The Central Government has kept 4 per cent Consumer Price Index (CPI) inflation as the objective for the period from August 5, 2016, to March 31, 2021. The maximum limit is 6 percent and the minimum is 2 percent.

1.2 The Monetary Policy Framework

The changed RBI Act gives the authoritative command to the Reserve Bank to manage and control the monetary policy. The system uses repo rate. Repo rate changes transmit through the currency market to the whole of the budgetary framework, which, impacts total request – a key determinant of inflation and development. Once the repo rate is reported, the working structure outlined by the Reserve Bank imagines liquidity administration on an everyday premise through suitable activities, which go for securing the working target – the weighted normal call rate (WACR) – around the repo rate.

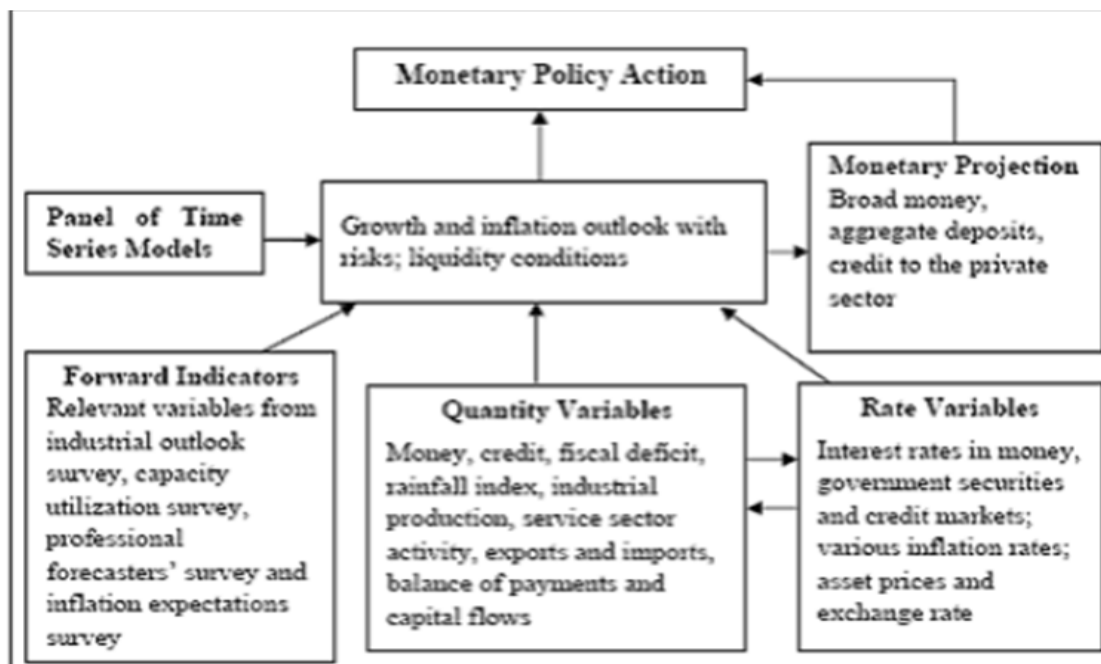


Figure 1.1: Monetary Policy Framework

The Financial Market Committee (FMC) meets day by day to audit the liquidity conditions in order to guarantee that the working focus of monetary policy (weighted normal loaning rate) is kept near the policy repo rate and is known as weighted normal call cash rate (WACR).

In India, the destinations of monetary policy advanced as keeping up price steadiness and to guarantee acceptable credit to the country. With globalization the markets are rising and the monetary policy in India endeavours to keep up a wise harmony between price stability, financial development and budgetary stability.

For stability of the cash request work, the M3 was utilized to accomplish the same (Chakravarty Committee 1985). Monetary administration included working out M3 development steady with anticipated Gross Domestic Product (GDP) with mild inflation. If a higher GDP development was needed, M3 was also high.

1.3 Monetary Policy: A Historical Perspective

The working technique of monetary policy in India has seen decisive and significant changes. The selection of targets, instruments and working method was influenced by monetary markets and the institutional plans. Amid the monetary policy focusing on period (1985-1998), while M3 development gave the ostensible grapple, the major focus was on saved cash and cash reserve ratio (CRR) was an important monetary instrument. In the pre-1991 period, the Reserve Bank relied on interest rate directions and credit control policy. These instruments were utilized discontinuously to deter the expansionary effect of substantial monetary shortages. Statutory Liquidity Ratio (SLR) was also used occasionally. The undertaking before the Reserve Bank was, along these lines, to build up the money markets for meandering tasks.

The year 1992-93 covered a deregulated period. The Reserve Bank additionally decreased the SLR to its statutory least of 25 for every penny in October 1997. The e CRR was also reduced 15 to 9.5 for each penny in November 1997. The programmed adaptation of deficiencies was additionally eliminated in April 1997. Each one of these improvements brought about a decrease in pre-emption of assets from the banking framework from a pinnacle of 63% to 35 % from 1992 to 1997.

The Narsimham Committee (1998) noticed that the currency showcase was disproportionate, lean and erratic. The Reserve Bank had imperceptible nearness in the market. Consequently, it reiterated the need to change the call currency showcase into an unadulterated between bank advertise and prescribed the Reserve Bank's activities to be showcase based. For reliance to these

the Reserve Bank presented the liquidity adjustment facility (LAF) in June 2000 to oversee advertise liquidity recurrently and additionally to convey interest rate symbols to the market. Under the LAF, the Reserve Bank's policy repo rates and reverse repo rates dominated. Open market Operations (OMO) including LAF rose as the predominant instrument of monetary policy. CRR was utilized as an additional instrument of the monetary policy.

The collateralized currency showcase sections grew quickly. Developments of other currency advertise instruments like commercial papers (CPs) and commercial deposits (CD) were bit by bit abbreviated to seven days keeping in mind the end goal, which was to regulate the development structure.

Overseeing the substantial and tireless capital inflows lead to liquidity administration activities in 2000 onwards era. The liquidity effect of generous capital inflows were sanitized through OMOs and LAF. This lead to market stabilisation scheme (MSS) being introduced in April 2004. This led to issuance of government securities. Interestingly, even with inversion of capital streams amid the ongoing emergency.

All these changes have additionally prompted change in liquidity administration activities by the Reserve Bank as shown through Figure 1.1. Exclusive reliance was now on fiscal policy through Fiscal Responsibility and Budget Management (FRBM) Act. This change catered to a perceptible change in monetary administration.

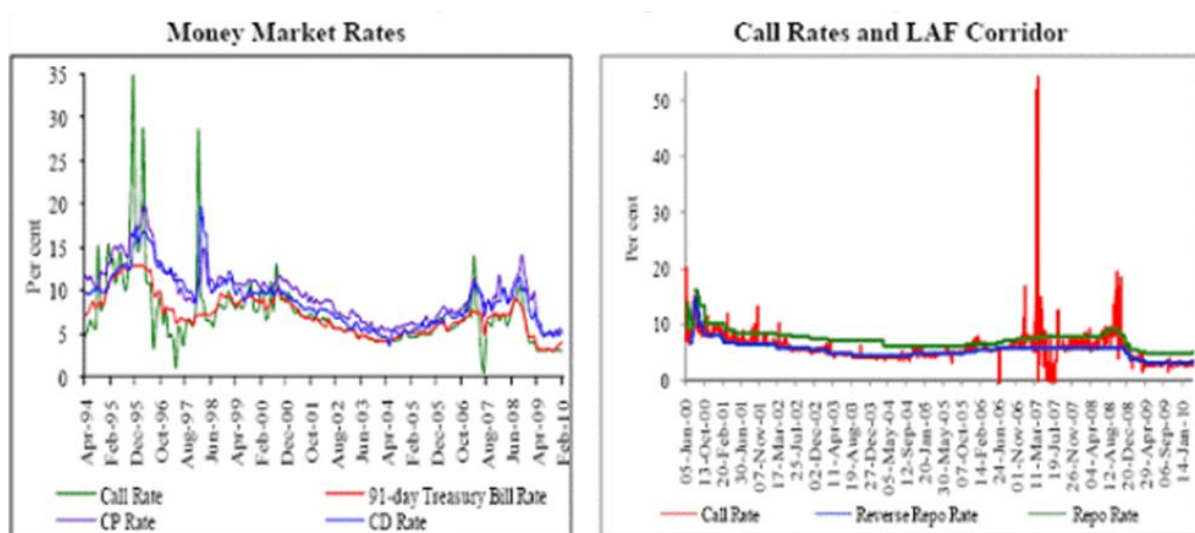


Figure 1.2 : Money Market Integration and Policy Rates

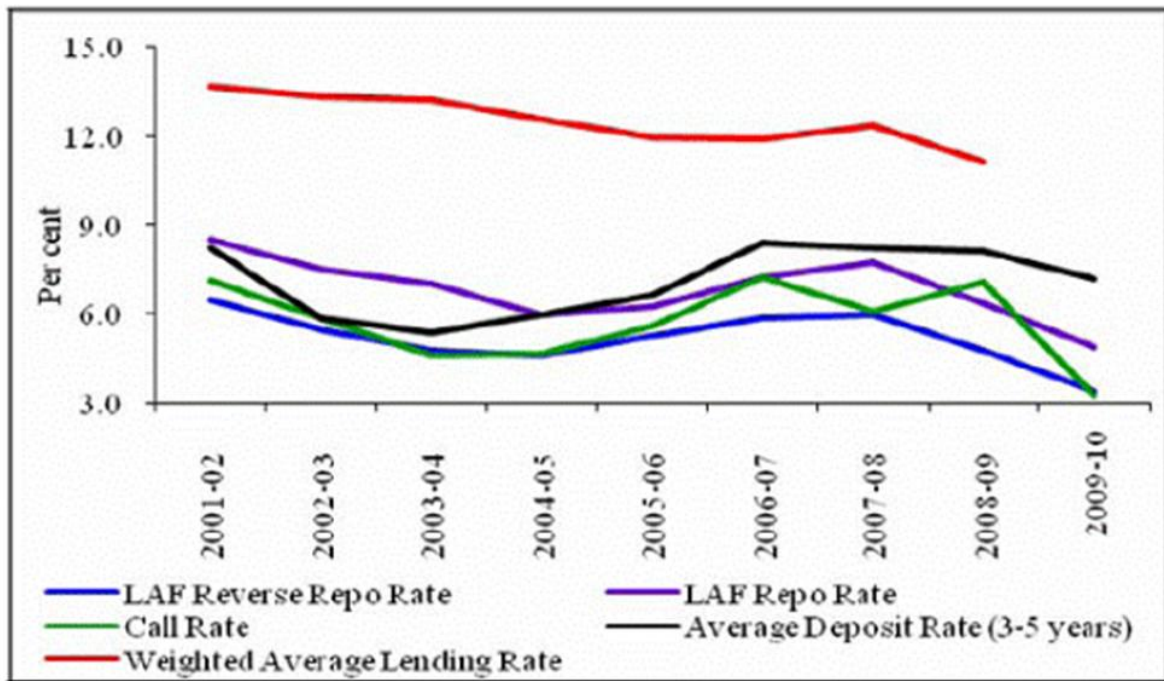


Figure 1.3 : Transmission of Policy rate to Lending Rate

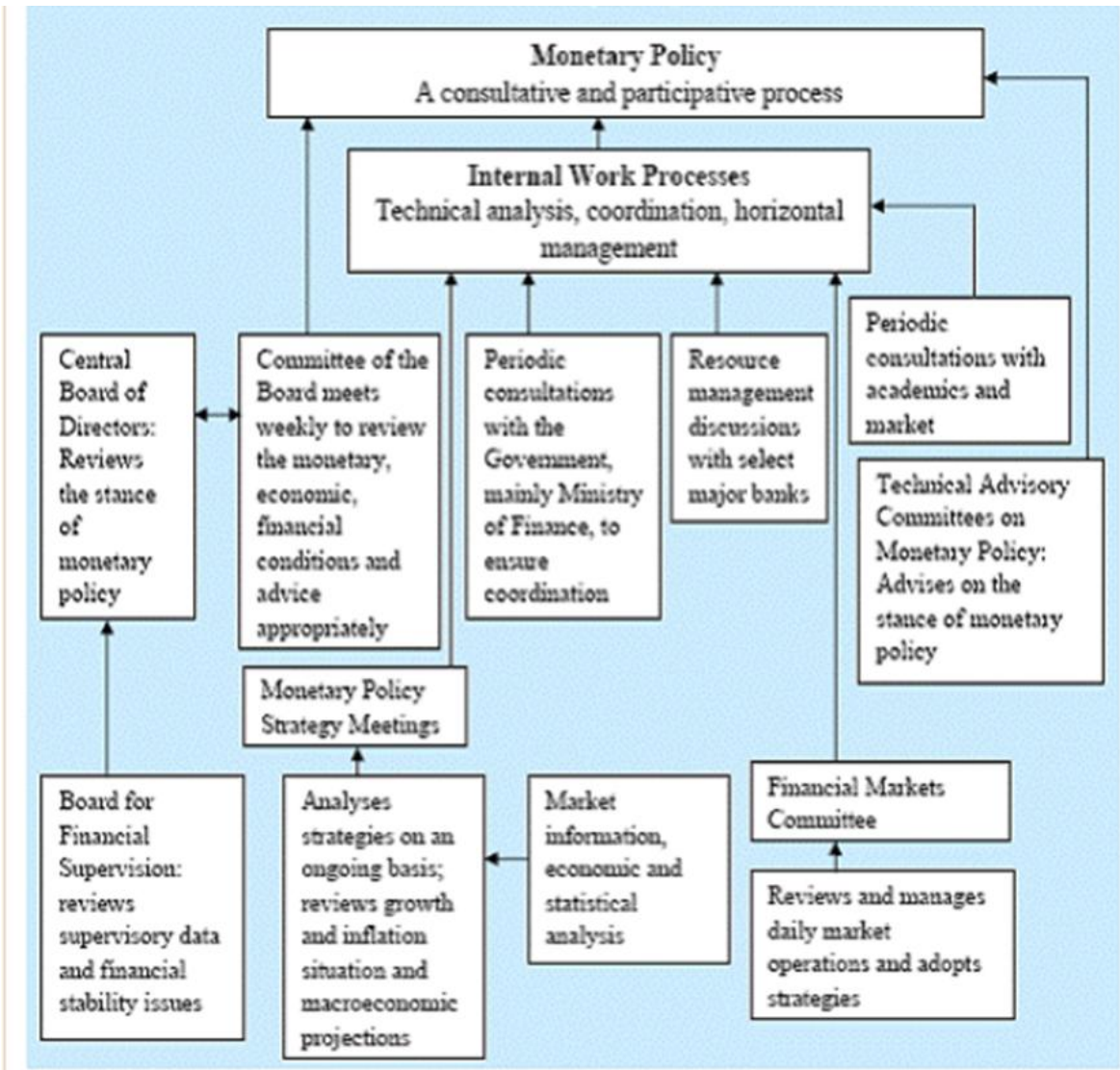


Figure 1.4 :Process of Menetary Policy Formation

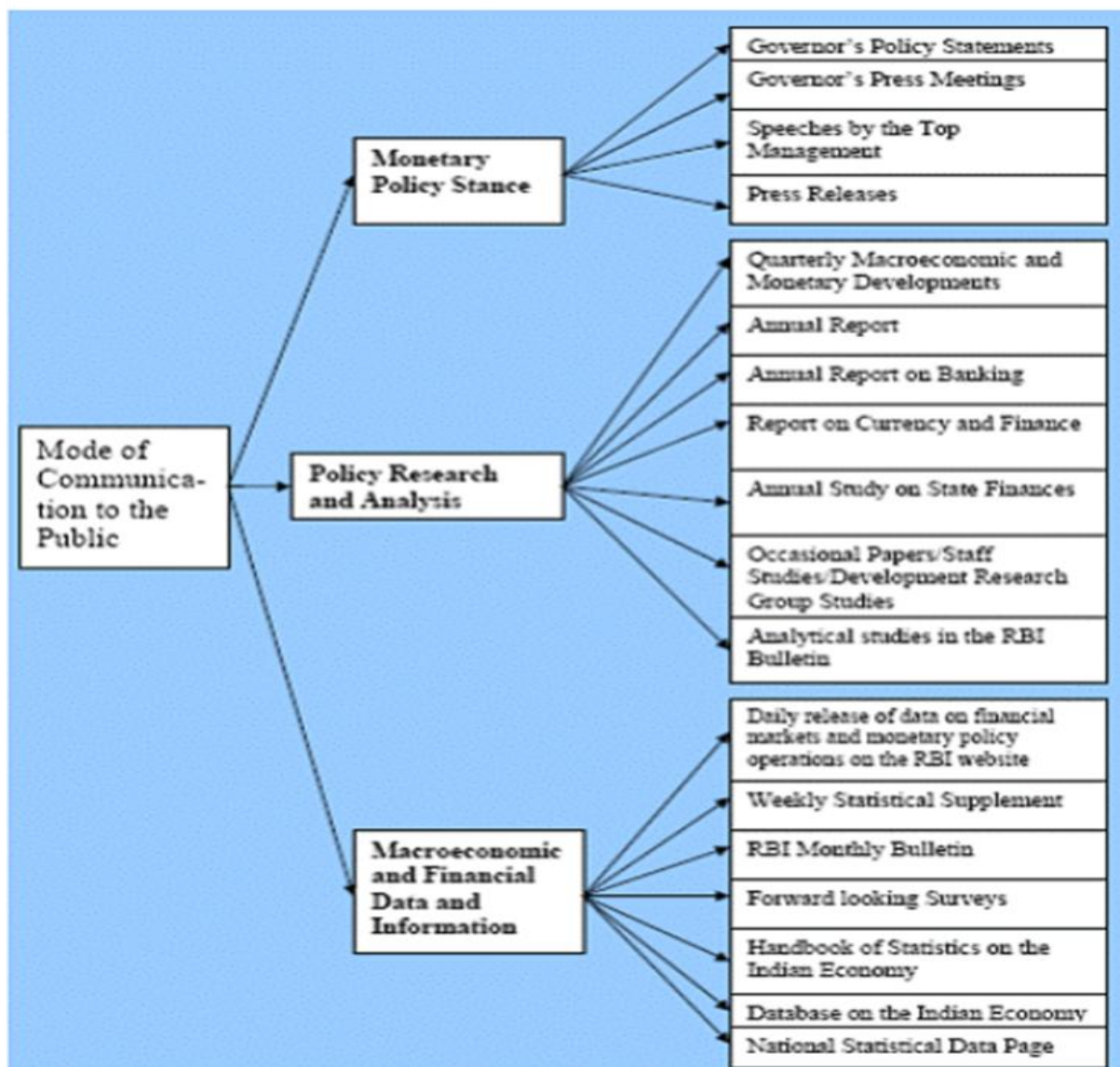


Figure 1.5: Information Dissemination and policy

1.4 Working Procedures of Monetary Policy during 1990s

In the mid 1990s and in the Late 1990s the working technique of monetary policy in India has developed throughout the years from control and bearing of credit to liquidity administration in a market domain. Prior monetary policy was led to a great extent through direct instruments of monetary control. These lead to recommending store and loaning rates of commercial banks, particular credit control over delicate wares, segment particular standing offices, statutory liquidity ratio (SLR) and the cash reserve ratio (CRR). Despite these the bank rate was also utilized as an instrument of financing cost policy.

By the mid-1980s, the monetary policy working system started to witness a recognizable move with the presentation of adaptable monetary focusing on approach following the suggestions of the Chakravarty Committee (1985) and currency showcase reforms following the proposals of the 'ghul Committee (1987). This procedure was speeded up with the commencement of monetary policy changes in the mid 1990s. The procedure of deregulation of financing costs, which started agile mid 1990s, was generally finished by October 1997, with the exception of a couple of classes. Correspondingly, the particular credit control tasks were to a great extent eliminated by 1994 and most division particular renegotiate offices were pulled back by 2002. Likewise, the utilization of CRR as an instrument of monetary control was logically de-accentuated and the liquidity administration in the framework was progressively embraced through open market operations (OMOs), both by and large.

In this procedure, the Liquidity Adjustment Facility (LAF) presented in June 2000 rose as the main working instrument for tweaking here and now liquidity. Therefore, the repo rate and the reverse repo rate rose as the key instruments for flagging the monetary policy position. These instruments, alongside the CRR, OMOs and market stabilisation scheme(MSS) have served the Indian monetary and budgetary framework well. At that point there was a need to believe to return to the working strategy of monetary policy.

Accordingly, as reported in the main Quarter Review of Monetary Policy for 2010 on July 27, 2010, the RBI constituted a Working Group to audit the system of the working technique of monetary policy under the chairmanship of Deepak Mohanty. The board of trustees characterized the working method of the monetary policy in India into four stages (i) developmental stage (1935-1950), (ii) advancement phase(1951-1990), (iii) early change stage (1991-1997), and (iv) liquidity alteration facility stage (1998 onwards). In any case, to characterize the working technique of monetary policy in different stages is past the extent of this unit. The intrigued users can allude the report in the RBI site for facilitate top to bottom examination. The RBI presented an Interim Liquidity adjustment Facility (ILAF) in April 1999 to limit unpredictability in the currency advertise by guaranteeing the development of here and now loan fees inside a sensible range.

Under the ILAF, the Bank Rate went about as the renegotiate rate (i.e., the rate at which the liquidity was to be infused) and liquidity ingestion was done through (settledreverse repo rate) reported on an everyday premise. The change from ILAF to an undeniable LAF started in June 2000 and was attempted in three phases. In the main stage, with impact from (5thJune,2000)

reverse repo offered approach to barbers. At that point, in this way, the LAF plot was amended, considering the proposals of the Internal Group on LAF and recommendations from advertise members and specialists. In like manner, the 1-day reverse repo was eliminated, and in its place the 7-day settled rate reverse repo once a day and the 14-day variable rate reverse repo on a fortnightly premise were presented in March 2004. Repo task was, notwithstanding, held on a medium-term premise. Additionally, the repo rate was downsized to 6 for each % point and lined up with the Bank Rate under the overhauled LAF.

As needed a solitary liquidity infusion office accessible at a solitary rate was presented by combining the ordinary office and screen office to reestablish adaptability in Liquidity administration, the RBI reintroduced the 1- day settled rate reverse repo in August 2004 while proceeding with 7-day and 14-day reverse repos and medium-term settled rate repos. In the end, so as to have more noteworthy adaptability in liquidity administration, the 7-day settled rate and the 14-day variable rate reverse repos were eliminated and the LAF was worked through medium-term settled rate repo and reverse repo viable from November 1, 2004. With impact from October 29, 2004, the classification of repo and reverse repo was exchanged according to universal use.

The third phase of undeniable LAF started with the full computerization of the Public Debt Office (PDO) and the presentation of the Real Time Gross Settlement (RTGS) framework empowering repo tasks fundamentally through electronic exchanges and the activity of LAF at various circumstances of that day. Around this time in 2005-06, the economy saw solid and maintained credit request, bring down gradual addition of forex holds, develop of the inside's money adjusts with the RBI and the reclamation of India Millenium Deposits (IMDs). All these prompted the infusion of liquidity by the RBI. Amid this time, to adjust the administration of everyday liquidity because of recommendations from showcase members, the Second LAF (SLAF) was presented once a day in November 2005. LAF is presently utilized occasionally, contingent upon liquidity conditions, as opposed to as a standard office.

To keep up the budgetary and monetary steadiness from one viewpoint and to accomplish extreme targets of Indian Economy then again, the RBI put unique policy measures by utilizing immediate and backhanded instruments of monetary policy. The different major immediate and backhanded instruments amid the 1990s are cash Reserve Ratio (CRR), Statutory Liquidity Ratio (SLR), , Open Market Operation (OMO), renegotiate policy, specific credit controls and diverse measures for the advancement of the cash showcase individually.

The CRR alludes to the money which banks need to preserve with the Reserve Bank of India as a specific level of their Net debt and time liabilities. Under the arrangement of the Reserve Bank of India Act, the planned commercial banks were required to keep up a specific amount of money with RBI. The aggregate money savings that are really kept up by a planned commercial banks consist of the base statutory liquidity ratio of three for every % point, extra savings to meet the contrast amongst CRR and statutory liquidity ratio of three for each % point, the extra money savings identifying with the incremental net debt and time liabilities as might be recommended now and again. In 1980's the CRR was changed in diverse areas as one of the critical policy measures.

Amid the beginning of the year 1987, there was a vast change in the general liquidity. With a view to immobilizing a piece of the liquidity of managing an account framework without thwarting the occasional stream of credit to beneficial area, it was chosen to raise CRR from 9 for every % point to 9.5 for each % point viable from the fortnight starting, February 28, 1987. In the period 1990-91, the Narsimha board of trustees had prescribed that the CRR should keep on being utilized as an instrument of monetary control. However, it was perceived that the current levels were high and should have been cut down. In the first of 1991, a percent incremental CRR was presented on May 1991. In perspective of the most grounded expansionary affect of the vast monetary shortfall in 1993-94 and the expansion in net remote trade resources in the second half of 1993-94, it was important to raise the CRR. As needed, in the monetary policy declaration of May 14, 1994, it was Reported on 01 May 14, 1994, and was shown that the CRR would be raised by one percentage point from 14 to 15 %y in the three stages.

The year 1996-97 was critical in numerous ways in connection to the lead of monetary policy in India. It was the first run through, the CRR was decreased forcefully by 4 for every% point. A period arrangement plot of CRR is introduced beneath. The present rate of CRR is 6 percent. Hence CRR has been considered as the real instrument in 1980s. The pattern of CRR in that period is high. An expansion in Cash Reserve Ratio (CRR) will make it obligatory with respect to the banks to hold a vast extent of their deposits as stores with the RBI. This will decrease the measure of their stores and they will loan less, which adversely affects the bank's productivity. This will thus diminish the cash supply. RBI utilizes this instrument to increment or decline the reserve necessity depending on whether it needs to influence a decline or an expansion in the cash supply. Cash Reserve ratio is an important instrument of RBI.

1.5 Organization of the Thesis

The thesis comprises of five chapters: Introduction, Review of Literature, Research Design and Methods, Results and Discussion and Conclusion.

Chapter 1 of this thesis provides a general introduction to the monetary policy and presents the historical perspective and working of monetary policy in India.

Chapter 2 presents review of literature pertinent to the topic. This chapter presents the theoretical and empirical findings of the studies cited. Review of literature guides us to develop research questions.

Chapter 3 presents the research design and methodology. It encompasses description of the research approach and procedures.

Chapter 4 of the study presents the results and discussion.

Chapter 5 covers the conclusion. The implications of the results obtained and suggestions for the future study have also been discussed in this chapter. Contributions and limitations of the present study have also been presented.

CHAPTER 2

REVIEW OF LITERATURE

As investment choices are made over a medium-term skyline, it is imperative to think about genuine loaning rates in a medium-term viewpoint. Borrowers tend to see the ostensible loaning rate as far as a coveted genuine rate of return and expected swelling. In spite of the fact that a few techniques, including studies, are utilized to figure expected swelling, it is hard to allocate expected qualities with a sensible level of accuracy given the vulnerability encompassing the future results. As loan cost deregulation advanced in the 1990s and the loaning rate administration changed every now and again, there was huge change in the advance valuing instrument by banks (Kaushik)

Bhattacharya (2004) talks about the choice of monetary policy exercised in India. The monetary policy in India depends on the stability of demand for money. It also is based on the shocks to the real and financial sector. He talked about the independence and the transparency of the central bank and the RBI Act 1934. The task of the RBI is to maintain the internal stability and external stability. He says that the Credit growth increases positively with the GDP growth. He also quoted how ready 2005 observed how price stability is influenced by the democratic process of governance in India. In his paper he talked about the different committee reports to evaluate and assess the working of monetary system in India like the Chakravathy committee report. The concept was very different from the traditional Monetary Policy. He said that even in the second half of 1980's there was no specific monetary target in India , Banks had their freedom in fixing their own rates but were subjected to some restrictions and they could not even handle this reform.

Currently the Indian Monetary policy looks similar to that of the Federal Reserve of USA and the ECB of Europe. We can divide the monetary policy transmission in 4 phases; in the first phase the policy rates of central bank affect the overnight rates. In the second stage, the changes in the short term rates lead to changes in the long term rates and finally in the third stage, the long term rates change the aggregate demand. In the final stage the determination of the output and prices is inferred by how the aggregate demand and supply collide with each other. There is positivity of data and information which is the most serious in the last case which left many questions unanswered such as the data on organized sector of India is insufficient which leads to stoppage in determining the factors of cost push and demand pull in certain situations. Bhattacharya says that

monetary policy should be combined with fiscal, administrative and competition policy so that all the rates including the rate of inflation in India can be stabilized because solely reducing the rate of Inflation via the Monetary policy is a tough task when the data and statistics are scarce and limited.

Kamin & Turner (1997) in their paper "The Transmission mechanism in Emerging market economies" discusses an overview of the changes in the organization of the economy like Balance of Payment (BOP) changes, Balance sheet changes, changes in financial sector institutions and how they tend to change the monetary policy. This helps the RBI to be aware of this structural change and continuously evaluate the transmission of the monetary policy. It is very tough for the developing countries than the developed ones to achieve the goals of the monetary policy. The developing countries give a larger importance to BOP equilibrium because of very low admittance to international capital markets. On the contrary in the Industrialized nations the increase in the money supply would affect output in the short run, while it would lead to higher prices immediately with little impact on the level of activity in the less developed countries.

This usually happens when high inflation is there with a combination of low central bank credibility which leads to short changes in the inflationary expectations and the real prices because of the fluctuations in the financial markets the ability of the monetary policy is reduced to affect output so the goal should be just to focus on price stability.

Even if price stability is the goal and purpose of the monetary policy, it is impossible to not take into consideration the effects of Monetary Policy on production and employment. Developing economies have very high inflation exacerbate the output costs of disinflation, so for this reason the central banks always go for disinflation policy and depend on domestic ways of disinflation.

Interest rate changes change the aggregate demand and also affect borrowers and lenders. The second challenge is how the monetary policy affects the prices of domestic assets. The exchange rate is the third channel. The fourth one is the availability of credit. The poorly developed countries or the countries which have weak financial system, the interest rates do not change to bring equilibrium in the market.

In the highly developed markets the interest rate changes influence the economic activity. There were periods of very high growth in bank credit in growth the developing and developed market and

even then both of them faced a financial crisis. So the inference is that high real interest rates co-exist with high credit growth.

Ameto, Filardo et.al (2005) in “Research on exchange rate and monetary policy and overview” talk about the approaches that the central bank use in exercising exchange rates. There is a linkage between exchange rates and inflation that diverse countries have taken into consideration to influence their monetary policy decision. To forecast exchange rates has been tough and complicated because of the volatile changes in the financial market. This paper shows how the central bank exercises the exchange rate in the short and medium and long period.

Different models like Purchasing power parity, portfolio balance models, open economy and macroeconomic models are used by the central banks to exercise the exchange rate behaviors. The importance of PPP is just limited to traded goods not services. The PPP focuses on the law of one price. The countries in the early stages of evolution and change had exchange rates that were undervalued in the beginning but in the later stages it led to increase in the real exchange rate because of the changes in the quality of goods and services. The portfolio balance model uses a Phillips curve, a Taylor rule, etc. but most of the central banks still employ traditional macroeconomic models. Even now the exchange rates are influenced by the commodity prices such as the New-Zealand and Australian Dollar which affect the real exchange rate.

The paper also talks about the effects of exchange rates on inflation and production. For most economies which are developed the policy makers do not take into consideration the exchange rates but in the developing countries the exchange rates plays a vital role in targeting inflation. The weightage of exchange rate is diverse for different nations only one thing is common in all and that is how the exchange rate influences the domestic inflation.

The exchange rate plays a relevant role in New Zealand in 1983 to 1993 when the economy had disinflation and the effects of the exchange rate were subsequently higher in affecting inflation so the exchange rate is an essential transmission conduit for monetary policy. During early days of disinflation the central banks face difficulty in exchange rates but the countries which have high inflation prove to be effective. Hence they concluded that managed peg was important in acquiring certain levels of disinflation. Liberalization in the developing economies can lead to asset bubble, so managed floating results in a decline in financial volatility. If the exchange rate is more fluctuating, it leads to more changes in the interest rates than the more desired ones. Hence it is more better to

target the non traded inflation and to increase the forecast horizon to a longer period probably the medium term horizon.

The paper finds that to match up market expectations it is important to bring transparency in central bank system along with relatively fixed exchange rates. This can help in the reduction of exchange rate fluctuations . The conclusion was that ECB statements had a very less influence on the level of Euro dollar rate. Central banks should intervene to fulfill its signaling role. One example is that of the central bank of Chile. Another fine example is that of the bank of Canada. The bank has not intervened since 1998.

The paper reviews the implications of exchange rates for monetary policy. It sheds light on the issues of central banks. The question that arises is what appropriate responses can be taken of monetary policy to exchange rate fluctuations. Another question also arises that should monetary policy respond only to exchange rate changes which in turn influence production and rates of inflation. In the second part of the research they have examined when and where the countries actually felt difficulties in putting into place the exchange rates into their distinctive monetary policies.

Thus in this chapter the review of literature is done to understand the role of the monetary policy especially in developing countries and developed and industrialized nations. Different researchers have expressed different viewpoints, highlighting a very important role to being an observer or signaling role. This sets the momentum of research in this area, where there are diverse opinions.

CHAPTER 3

RESEARCH DESIGN AND METHODOLOGY

This study presents research that applies contemporary monetary theory to the analysis of the monetary and financial aspects of the Indian economy and the influence of the monetary policy on the performance of the economy. Indian monetary policy has attracted momentous notice from macroeconomists across the world and from the country itself. The focus is on the role of the monetary policy regarding the growth, and performance and how it needs to be monitored through the various instruments to fit in these objectives. The study covers its role in a major emerging market economy. In view of advances in financial market imperfections and structural constraints that influence the economy, there is an important role of the monetary policy.

Objectives of the Study:

O1: To evaluate Monetary Policy of India From 2011-2017.

O2 : To examine the impact of Monetary policy in India

This study predominantly centers around the Basic structure of Indian Banking framework like Types of Managing an account, Banking Scenario in India and in addition World, Phases of Indian Banking like Globalisation, Liberalization and Privatization. Alongside this section additionally incorporates the Proposal of Narasimham Committee on Banking Sector. The money related change process is regularly thought of as involving two phases – the primary stage guided extensively by the Narasimham Committee I report while the second depends on the Narasimham Committee II suggestions. The point of the previous was to achieve "operational adaptability" and "practical independence" in order to improve "effectiveness, efficiency and gainfulness". The last mentioned concentrated on realizing auxiliary changes in order to reinforce the establishments of the managing an account framework to make it more steady. This paper incorporates Basic data about Reserve Bank of India, Interest Rates. It also incorporates the Conceptual examination of Monetary or Credit Policy of RBI. Controlling of Expansion is another point of credit approach so this section likewise centers around the Phenomenon of Expansion, Impact of Inflation and Relation amongst inflation and Money Supply.

The credit creation limit of banks is influenced by CRR. Banks need to keep a piece of their aggregate savings in fluid structures (liquidity). This liquidity is kept in real money and government securities. This instrument of money related strategy likewise influences the credit creation limit of banks. At the point when SLR is raised the banks need to keep a greater amount of their aggregate savings in liquid and the credit creation limit is antagonistically influenced and it is done to receive the dear cash approach.

Data ad Variables of The Study

- Qualitative Methods

- i. **Bank Rate** - The rate at which RBI rebates bills for commercial banks. This managing account framework includes business and co-agent banks These include: Industrial Development Bank of India (IDBI) , Industrial Finance Corporation (IFC), Export-Import Bank of India (EXIM) and other affirmed monetary establishments. Increases in the Bank Rate increases the cost of lending by commercial banks. This leads to reduction in credit volume to the banks and decreases the cash supply.
- ii. **Repo Rate:** This is the rate at which the Commercial Banks attains cash from the Reserve Bank of India. Lessening in repo rate encourages the commercial banks to get cash at a lower rate and vice versa. The expansion in the repo rate will increase the cost of obtaining loaning from the banks. This leads to decoration in lending and such a step enhances the cash storage.
- iii. **Cash Reserve Ratio:** This is kept as reserve in RBI by the commercial banks. An increment in CRR leads to reduction in liquidity in the framework and the other way around. RBI can vary CRR within 3 to 15 percent.
- iv. **Statutory Liquidity Ratio:** These are the deposits which the commercial banks are require to keep with the RBI. They are in the form. Gold, Cash or Government affirmed securities. It is mandatory for banks to inform of their SLR to RBI every Friday. In case of negligence even it is punishable. RBI can increase it to 40% in case it wants to decrease liquidity. An

expansion in SLR additionally confines the banks use position to direct more cash into the economy.

- v. **Reverse Repo Rate:** This is the rate at which the RBI acquires cash from commercial banks. An expansion in the switch repo rate will diminish the cash supply and the other way around, other things constant. An expansion in reverse repo rate implies that commercial banks will keep more funds with the RBI ,in turn decreasing the supply of money in the market. When the repo rate and the reverse repo rate increases it means that the policy of the RBI has become stronger.

Qualitative or Selective Methods

- i. **Open Market Operation:** This includes purchasing and offering government securities from or to the general population and banks. The RBI pitches government securities to get credit and purchase government securities to build credit. Open Market operation can thus lead to credit expansion and contraction.
- ii. **Margin Requirements:** They are enforced to ensure the credit of theoretical exercises. Costs of these government securities, Shares are affected by enjoying theoretical buys with the assistance of bank credits. Higher edge is forced to debilitate such credits.
- iii. **Consumer's Credit Regulation:** Customer's durables are all the time obtained with the assistance of bank advances. Abundance as well as inadequate interest for these things irritate the creation. Overabundance request additionally prompts hypothesis and dark promoting. To stay away from these issues purchaser credit is to be controlled.
- iv. **Directives:** The Central Bank has a direct function and instructs the commercial banks to take certain activities. Commercial banks might be requested to be inflexible in conceding to credits or take after some other financial train requested by the circumstance. The accomplishment of this technique relies upon the notoriety and intensity of the Reserve bank of India.
- v. **Rationing of Credit:** The national bank may force a roof on advances. Such roofs might be on total loaning. Confinements additionally might be forced on reducing offices for singular bank.

- vi. **Moral Suasion:** It alludes to the different types of interests of the Central Bank to the commercial banks to take after a specific line of activity. Interests of the Central Bank may appear as assembling conference of the leaders of the business banks, letters or brochures, oral demand, dialog or some other casual methods for passing on the Central Bank's want to business banks to actualize the credit policy all the more thoroughly.

CHAPTER 4

RESULTS AND DISCUSSION

MONETARY POLICY OF INDIA: 2011-17

In this chapter the researchers have highlighted the Monetary Policy of India for the period 2011-17. The same is depicted through Table 4.1 and Figure 4.1

Table 4.1: Important Parameters of Monetary Policy

	Percentage
Inflation	7.50
Bank Rate	6.50
CRR	4.00
SLR	20.50
Repo Rate	6.25
Reverse Repo Rate	5.75
Marginal Standing Facility rate	6.50

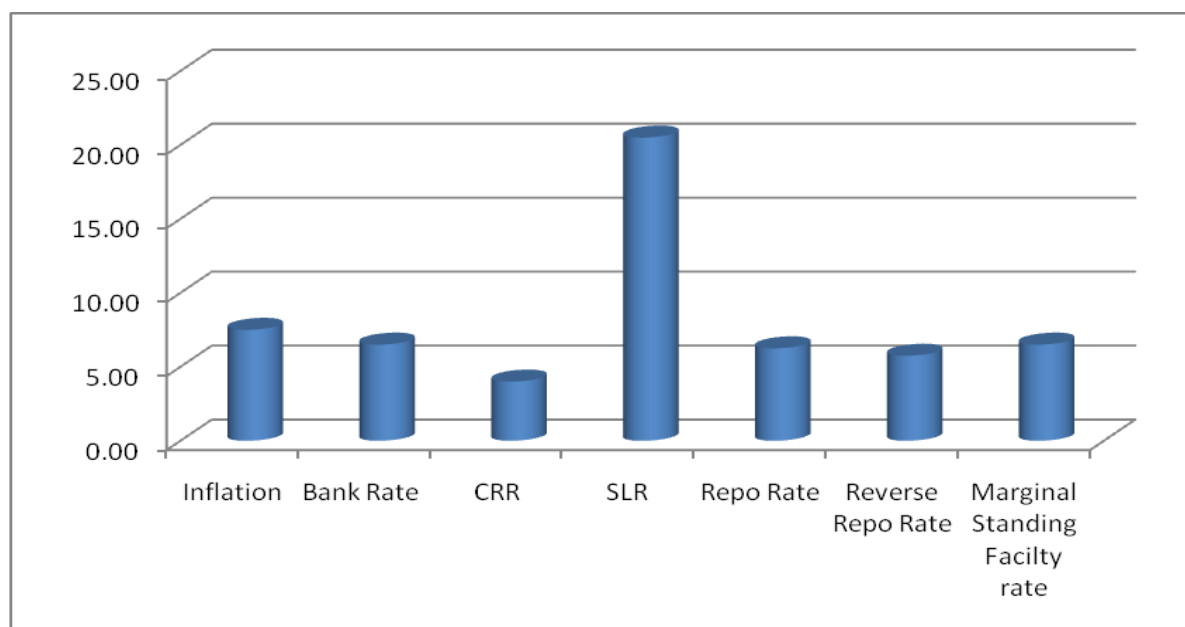


Figure 4.1: Important Parameters of Monetary Policy

4.1 MONETARY POLICY OF INDIA: 2010 -11

O1: To evaluate Monetary Policy of India From 2011-2017.

In the light of rising inflationary trends from January 2010-October 2011, the Reserve Bank had begun monetary fixing. This aided in directing expansion from its pinnacle of 10.9 in April 2010 to a normal level of 7.5 for each % to August 2012. The development backed off and is at present underneath slant. This log jam is because of a large group of elements, counting monetary contraction.

Since April 2012, the monetary policy position improved to adjust the growth-inflation dynamic. This was to capture the loss of development. If inflation grows further, monetary policy will act in conjunction with financial measures to moderate the development dangers. This will be done to lift the economy to a higher development levels.

Table 4.2: Important Parameters of Monetary Policy 2010-11

	2010	2011
Inflation	9.00	9.80
Bank Rate	6.00 (-)	6.00 (-)
CRR	6.00	6.00 (-)
SLR	24.00 (-)	24.00 (-)
Repo Rate	6.00	6.75
Reverse Repo Rate	5.00	5.75
CPI	8.30	9.00
WPI	9.00	9.80
GDP	8.40	7.80
M3	15.40	16.00

As shown in table 4.2 GDP rate decreased from 8.40 per cent to 7.40 per cent. Inflation was increasing from 9.0 to 9.8 percent. CPI level also showed an increase from 8.30 to 9.0 per cent. There was an acceleration in repo and reverse repo rate.

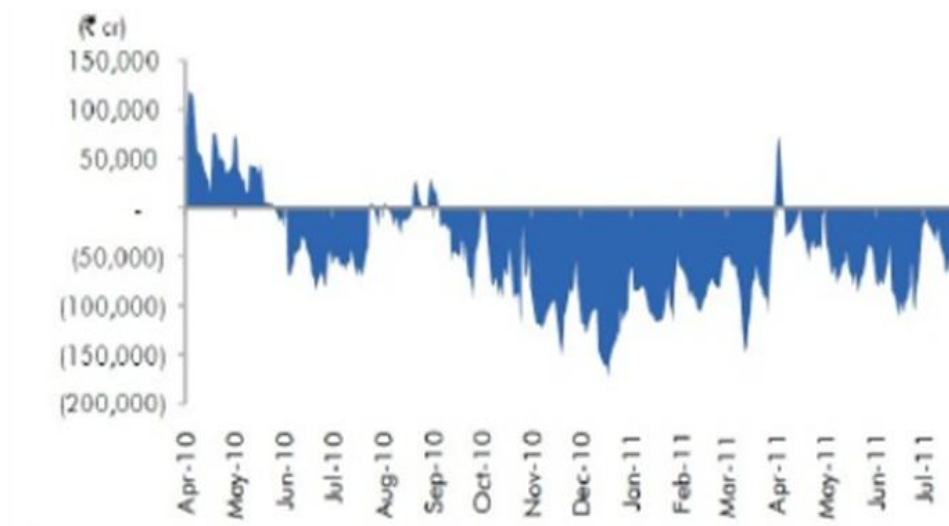


Figure 4.2: Liquidity Conditions

Liquidity conditions stayed in a deficiency mode throughout 2011-12. In any case, starting November 2011, the liquidity shortage was observed.



Figure 4.3 Manufacturing Activity

The manufacturing activity was moderate during the period. This got reflected in GDP.

Average net infusion of liquidity under the everyday liquidity adjustment facility (LAF) expanded from around '0.5 trillion amid April-September 2011 to around '1.4 trillion amid February 2012. This further accelerated to '1.6 trillion in March 2012. This reflected an amplification of the government money .

Reserve Bank founded a way to instill liquidity of harsh nature. It led open market operations (OMOs) increasing to '1.3 trillion from November 2011 to March 2012.

Cash reserve ratio (CRR) decelerated by 125 premise points. This infused '0.8 trillion liquidity.

Inflation levels were additionally on a directing pattern since Feb'11 until Feb'12.

4.2 MONETARY POLICY OF INDIA: 2012-13

With output extension of just 4.5 % in Q3 of 2012-13, the most reduced in 15 quarters, cumulative GDP development for the period April-December 2012 declined to 5.0 % from 6.6% a year back. This was fundamentally because of the extended shortcoming in modern movement disturbed by household supply bottlenecks, and a lull in the administrations part reflecting feeble demand. On the request side, the continuing decrease in capital merchandise generation amid April 2012 - February 2013 reflects discouraged investment conditions. The control in corporate deals and debilitating buyer certainty recommend that the log jam could be spreading to utilization spending. Liquidity stayed under strain during the time as a result of tenaciously high government money adjusts with the Reserve Bank and lifted incremental credit to deposit ratio for a great part of the year.

September 2012

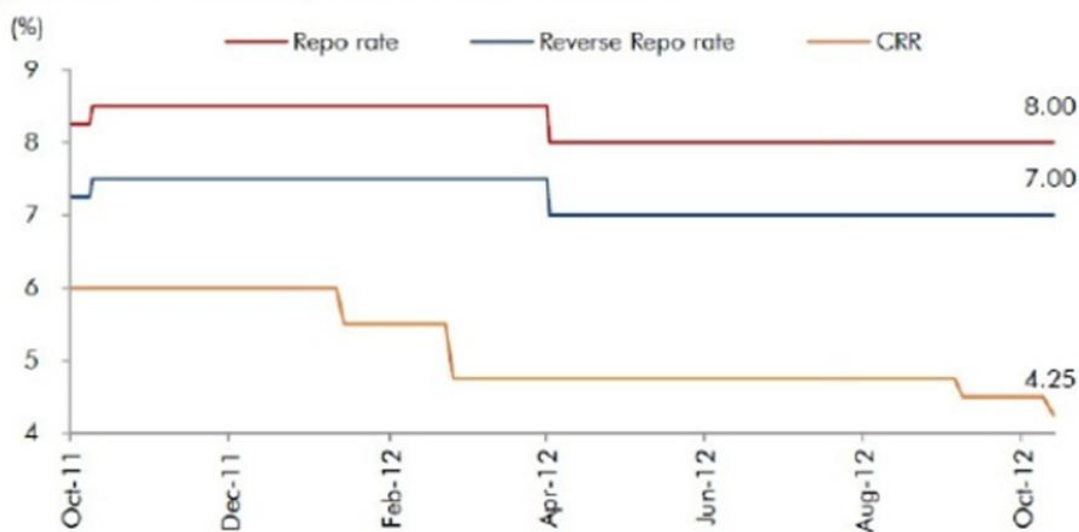
April 2013

Repo Rate:	8%	7.5%
Reverse Repo Rate:	7%	6.5%
CRR:	4.25%	4%
SLR:	23% (-)	23% (-)
Bank Rate:	9% (-)	8.5%
Inflation:	7.5%	7.54%
CPI:	9.6%	9.4%
WPI:	7.6%	7.5%
GDP:	5.8%	4.5%
M3	14%	-

Exhibit 1: WPI inflation remains elevated



Exhibit 2: Hawkish monetary policy stance



September 2013

April 2014

Repo Rate:	7.75%	8%(-)
Reverse Repo Rate:	6.75%	7%
CRR:	4%(-)	4% (-)
SLR:	23%	23% (-)
Bank Rate:	10.25%	9% (-)
Inflation:	6.74%	4.78%
CPI:	9.84%	8.1%
WPI:	6.46%	4.7%
GDP:	5%	5.8%
M3	-	-

Exhibit 1: Currency depreciation vis-a-vis USD

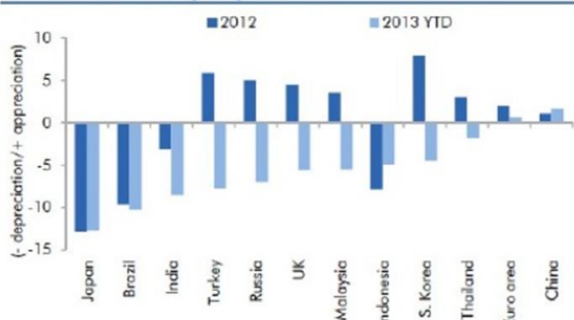


Exhibit 2: FII investment in debt and equity markets



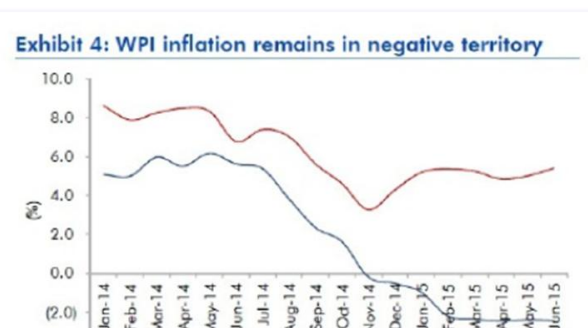
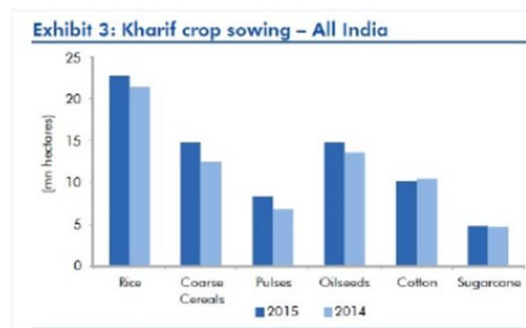
4.3 MONETARY POLICY OF INDIA: 2014-15

Hailstorms in March influenced 17% of the rabi-sown territory which thus affected food Inflation which eventually prompts ascend in CPI Inflation.

Lower Indian financing costs helped stop the rupee from fortifying further against other monetary standards whose national banks are cutting financing costs.

India's shopper Inflation edged up in February for the third straight month, predominantly determined by sustenance costs, underscoring the danger of a bounce back in inflationary weights from rising item costs.

	September 2014	April 2015
Repo Rate:	8%	7.50%
Reverse Repo Rate:	7%	6.5%
CRR:	4%	4%
SLR:	22%	21.50%
Bank Rate:	9%	8.50%
Inflation:	8%	-
CPI:	5.2%	5.0%
WPI:	2.6%	2.4%
GDP:	7.4%	6.7%
M3	-	-



4.4 MONETARY POLICY OF INDIA: 2015-16

Japan got away subsidies in the last quarter of 2015. In China, there was drowsy mechanical generation, contracting send out, capital surged and there was significant overabundance limit in industrial. This enforced changes in monetary and fiscal policy. Liquidity conditions, were extended further by gathering of money adjusts by the Government through elevated interest for money. The Reserve Bank attempted liquidity tasks to suppress these weights and supplemented typical activities with a lot of liquidity infused through tweaking variable rate repo barbers in tenors going amongst medium-term and 56 days.

Retail expansion estimated by the consumer price index (CPI) plunged in February after rise for six months. This great improvement was expected to a bigger than foreseen decrease in vegetable costs and impact on inflation

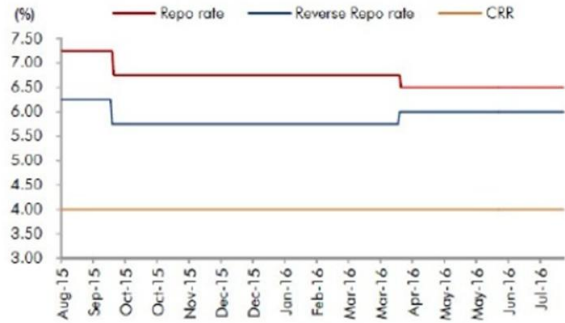
Inflation in the fuel group moderated across electricity, kerosene, cooking gas and firewood, the latter easing pressures on rural inflation. Inflation expectations decelerated to a single digit for the second consecutive round in response to these changes.

	September 2015	April 2016
Repo Rate:	6.75%	6.75%
Reverse Repo Rate:	6.4%	6.25%
CRR:	4%	4%
SLR:	21.50%	21.50%
Bank Rate:	8.25%	7.75%
Inflation:	3.7%	5%
CPI:	4.2%	5.4%
WPI:	5.0%	0.79%
GDP:	8.4%	7.6%
M3	-	-

Exhibit 1: Upward trend continues in CPI Inflation



Exhibit 2: RBI Policy rate movements



	September 2016	April 2017
Repo Rate:	6.5%	6.25%
Reverse Repo Rate:	6%	6%
CRR:	4%	4%
SLR:	23% (-)	23% (-)
Bank Rate:	7% (-)	6.5%
Inflation:	-	3.65%
CPI:	4.4%	3.6%
WPI:	3.57%	6.55%
GDP:	7.47%	7.0%

4.5 The Effects of Demonetization

Demonetization announced by the government had changes in the monetary policy. The step was taken to check black money.

In the first place, with the quickened pace of re-monetization, optional purchaser spending kept down by demonetisation is relied upon to have grabbed from Q4:2016-17 and will accumulate in force more than a few quarters ahead. The recuperation will likewise likely be helped by the decrease in banks' loaning rates because of huge inflows of current and savings accounts (CASA) stores, in spite of the fact that the more full transmission effect may be obstructed by focused on accounting reports of banks and the lukewarm interest for bank credit.

Second, different recommendations in the Union Budget 2017-18 are relied upon to be development fortifying: venturing up of capital use: boosting the rustic economy and reasonable lodging; the arranged take off of the GST: and ventures to draw in higher remote coordinate venture (FDI) through activities like nullifying the Foreign investment Promotion Board (FIPB).

Third, worldwide exchange and yields are required to extend at a more grounded pace in 2017 and 2018 than lately, facilitating the outside request limitation on local development prospects. In any case, the ongoing increment in the worldwide product costs, if managed, could negatively affect our net item bringing in household economy. At long last, the pace of financial action would fundamentally pivot upon the outturn of the southwest rainstorm, particularly in perspective of the rising likelihood being doled out to an El Nino event in July-August, 2017.

Thinking about the benchmark presumptions the quick pace of re-monetization, review pointers and refreshed model gauges, RBI staff's pattern situation extends that genuine Gross value added (GVA) development will enhance from 6.6 for each % point in Q3:2016-17 and 6.5 for each % point in Q4 to 7.0 for each % point in Q1:2017-18 and 7.4-7.6 for each % point in the staying 75% of 2017-18.

4.6 Inflation

It was the vast shock conveyed by demonetisation and the related wage stun that clarified a significant part of the general change in the inflation direction in the second half of 2016-17. Past monetary policy fixing kept on having instinctive impacts in containing inflation. Costs of perishables assumed the most conclusive part, notwithstanding amid the three months going before demonetisation. In the months instantly following demonetisation, perishables turned out to be considerably more unmistakable, with vegetable value developments getting to be critical after a decrease of 21 for each percentage point amid November 2016 to February 2017.

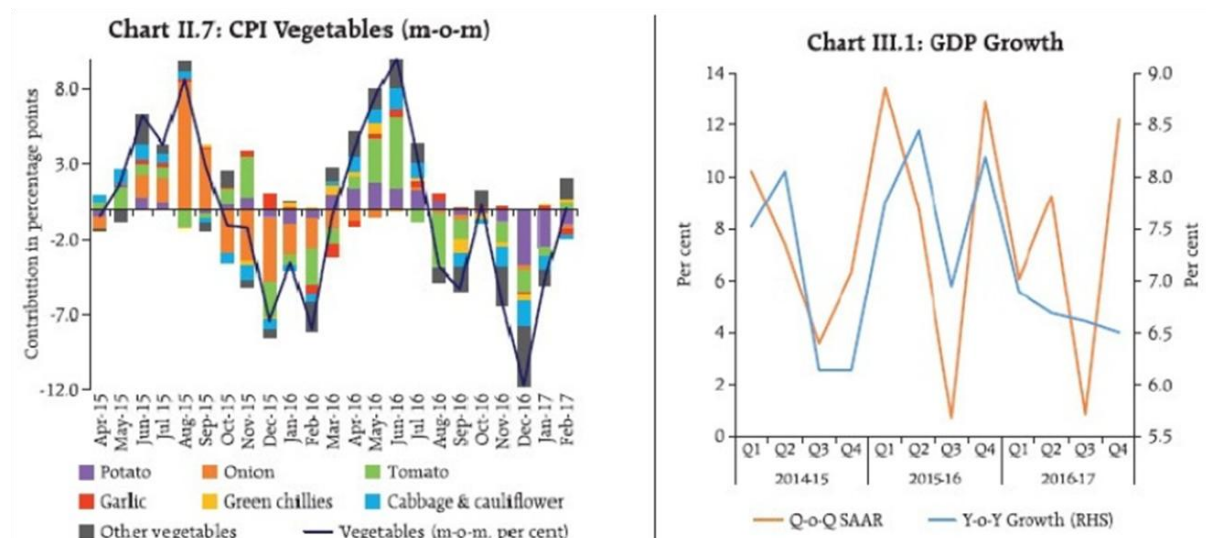
Exchanges in products of the soil have dependably been money escalated. Episodic proof focuses to trouble deals by ranchers, given their transitory nature. Vegetable prices typically do display a regular balance amid November - February consistently; amid the 2016-17 season, be that as it may. The decrease in vegetable costs was more articulated than in earlier years .

The spatial and fleeting elements of sustenance costs post-demonetisation demonstrate that inside the nutritional category, the decrease in vegetable costs was especially substantial and seen crosswise over states and crosswise over discount and retail showcases.

4.7 The Present Scenario 2017-18

O2: To examine the impact of Monetary policy in India

The Reserve Bank of India increased the repo rate by 25bps and the new rate was 6.25 percent on 6th June , 2018. There was deceleration in markets. Policy makers choice is steady with an impartial monetary policy position. The inflation focus was that of 4 percent +/- to 2 percent to sustain development. The reverse repo rate was increased to 6 percent from 5.75 percent and the minor standing office rate and the Bank Rate to 6.5 percent from 6.25 percent.



Summing up

Real inflation moved in the anticipated direction. In the e late spring vegetable costs were weaker and there was an abrupt increase of rate in CPI inflation barring nourishment and fuel.

GDP development for 2018-19 is at 7.4 for each % point. Gross domestic product development is anticipated to be 7.5-7.6 for each % point in H1 and 7.3-7.4 for each % point in H2, with dangers uniformly adjusted.

A few different dangers remain. To begin with, worldwide money related market improvements have developed as another imperative wellspring of vulnerability.

Second, the huge ascent in family units' inflation desires as accumulated in the May 2018 round of the Reserve Bank's overview could bolster into wages and info costs in the coming months. Notwithstanding, the go through to yield costs stays quieted by and by. Third, the stunned effect of HRA modifications by different state governments may push feature inflation up.

While the measurable effect of HRA amendments will be looked through, there is a need to keep an eye out for any second round effect on inflation. Fourth, the effect of the amendment in the MSP equation for kharif crops isn't conceivable to evaluate at this phase without sufficient subtle elements. Fifth, as estimate by the IMD, if the rainstorm is typical and very much circulated transiently and spatially, it might help keep sustenance inflation amiable.

The Reserve Bank of India left its key policy rate at 6 percent for the fourth gathering on April fifth 201. This was as per the business sector desires. Policymakers said by and by the choice is steady with the impartial position of monetary policy intending to accomplish the medium-term inflation focus of 4 percent +/- to 2 percent, while supporting development. The national bank brought inflation down to 4.5 percent for Q4 of the current financial year (January to March 2018) from 5.1 percent. Gross domestic product development for 2018-19 is seen higher at 7.4 percent from 6.6 percent in 2017-2018.

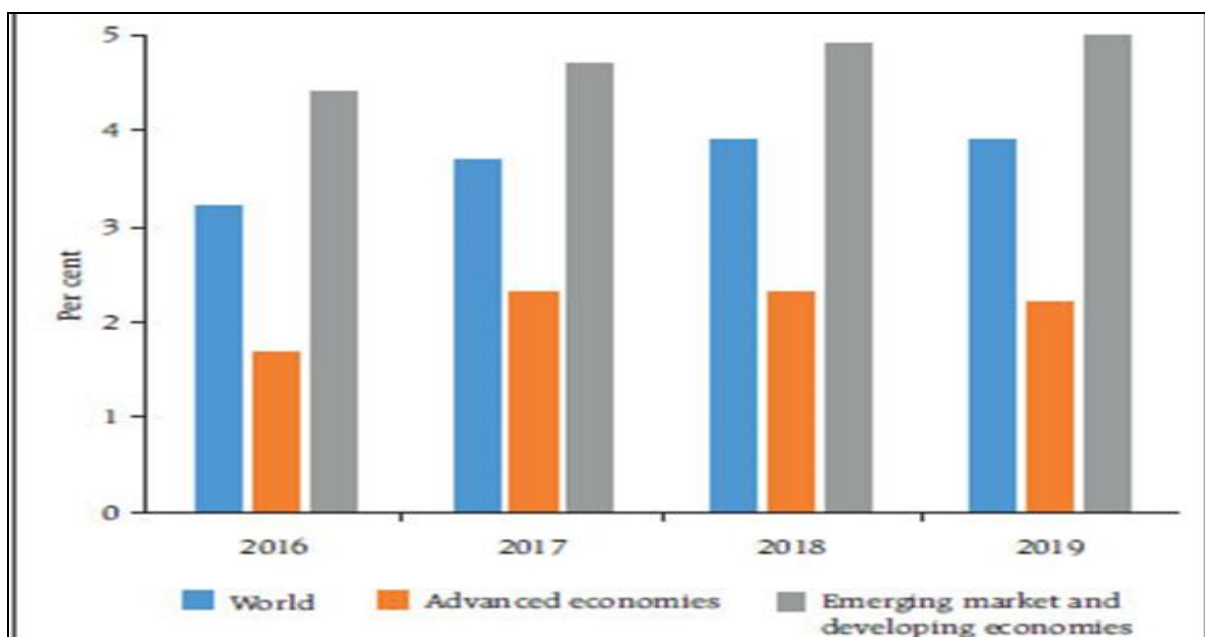


Figure 4.7 : Global GDP growth (Y-O-Y)



Figure 4.7: Inflation Expectations of Household

This chapter throws light on the changes in monetary policy instruments and the objectives of the economy. The main motive of the govt. is price stabilizations , but at the same time the GDP has to be increased. In view of globalization, the role of monetary policy becomes more important to keep pace with the changing dynamics of world economy.

CHAPTER 5

CONCLUSION

The monetary policy manages the capacity of cash supply in the market keeping in mind that it ought not cause the circumstance of inflation and recession. The Reserve bank of India is the central authority of the monetary policy In India which utilizes diverse instruments to control the inflow and surge of the cash in the economy. Monetary policy is vital for the financial development of a nation , its instruments assume an imperative part to change the monetary condition as indicated by the current financial circumstance.

In our undertaking to comprehend the part of monetary policy and monetary structures in the light of the Indian experience, it is seen that monetary policy in India had to a great extent been optional. The optional arrangements, at any rate amid the 1990s, were unavoidable because of the tremendous basic changes that were required to summon and control economy to a market-based one. In any case, reliable with universal patterns amid the 1990s, the inspirations that prompted such optional practices in India had for the most part been disclosed to financial operators in detail. Regardless of significant contrasts in a couple of regions, the monetary policy structure in India has absorbed a considerable lot of the best universal practices.

The RBI's general execution in straightforwardness and information spread were too acceptable. Its execution in surveying the viewpoint - in full perspective of open learning - had likewise been great and this may be guided desires for monetary specialists along the wanted direction. Together these highlights show the reception of a delicate, casual and adaptable rendition of the IT system like that rehearsed by numerous economies previously their formal change to IT. The Indian experience fortifies the perception of Mishkin (1999) that instead of the formal appropriation of an objective, "the unseen details are the main problem in accomplishing straightforwardness and responsibility". While monetary policy assumed a critical part in decreasing the rate of inflation in India, the paper contends that this accomplishment was because of mixes of monetary, financial, rivalry what's more, regulatory

strategies. It might be noticed that a portion of these arrangements, by upgrading proficiency and rivalry, usher moves in the total supply bend.

Accordingly, to segregate the presumable commitment of monetary policy in decreasing the rate of inflation to turn into a troublesome assignment, important insights relating to total supply circumstances are inaccessible. A characterizing highlight of the Indian way to deal with money related area changes is gradualism. This is in sharp difference to a portion of the developing business sector economies that received stun treatment.

To quote Reddy (2005), policymakers in India had been locked "in the advancement of sound what's more, proficient money related middle people and markets in order to give strong establishments to compelling transmission of monetary policy". So far as monetary policy is concerned, a vital exercise is that a cautious boundary of auxiliary policy measures from regular adjustment measures could be useful. For budgetary stability, the second arrangement of measures ought to be rapid, yet a juxtaposition of the Indian experience to other developing business sector economies appears to recommend that undue scurry in starting basic changes - while not really awful - could be unsafe. It is this last perception that features the significance of points of view in evaluating Indian execution. In depicting the Indian experience, Reddy (2005) does not discount "a component of good fortune", but rather opines that interest in establishment building was an "activity of sound judgment and improvement of aptitudes at all levels".

Balakrishnan (2005) sees an indistinguishable ordeal from a "not as much as innovative help to development", "an inability to demonstrate quickening" and a "strange instance of a missing monetary policy", with a grudging endorsement that "this does not warrant the conclusion that the changes fizzled". In this manner, similar to the notorious story of the Indian elephant which would appear to be unique to various individuals, the activities of Indian policymakers would maybe pull in various descriptive words from various people or associations.

Since the money related area isn't an independent element and for its adequacy different plans and casing works are required among which a compelling legitimate system is imperative. In this way, money related area changes has furnished the economy with a great deal of versatility and dependability and have blasted almost every area of the economy in any case, significance must be given to social area, for example, accessibility of well being

establishments, nature of basic training, proficiency rate and so forth, which regions of more worry as of late.

Furthermore, nations like China, Indonesia and even Sri-Lanka are in much better position. Therefore considering the part of RBI as a Regulator and Supervisor of the budgetary framework which have gone under different vital movements and RBI has made critical changes in the nature of execution of its administrative and supervisory capacity, and accordingly our norms are equivalent to the world norms.

In India, the opening up of the economy in the mid 1990s had a huge effect upon the direct of Credit or money related arrangement. Value dependability remains the key target of fiscal strategy and there is for all intents and purposes a national agreement that high swelling isn't great. Expansion desires and swelling resilience have descended. It even influences the spending choices and sparing example of the general population.

In specific circumstances, despite the fact that there are strategy commencements from the RBI, it may not be completely successful. This is on account of, notwithstanding when there are no adjustments in the cash supply, there might be changes in the value level because of numerous different reasons.

Here and now loan costs have risen as agent target or instruments of money related arrangement. National banks ordinarily figure showcase liquidity and afterward lead open market tasks to impact the financing cost structure to influence the genuine economy.

The Credit strategy is likewise expected to keep the inflation of the nation under control. Any economy can endure both inflation and deflation which are unsafe to the economy. So the RBI needs to keep up a reasonable adjust in guaranteeing that amid retreat it ought to embrace a 'simple cash strategy' though amid inflationary pattern it ought to embrace a 'dear cash arrangement.'

The Repo rate as of now is 6.25%. In the event that any bank ever needs supports for any reason then it can obtain from RBI by paying 6.25% intrigue. By expanding repo rates, RBI profits costlier, and by lessening this rate, it makes it less expensive, and along these lines, it attempts to accomplish the coveted compression or then again extension in the cash supply for managing inflation.

In 2013 it is very regular to watch circumstances where RBI is receiving tight money related strategy by expanding CRR and in addition the financing costs and contracting cash supply in the market, and back service declaring choices to give monstrous extra cash-flow to banks with the goal that their liquidity could increment and they could loan significantly more in the market. In 2014, RBI was fixing cash supply and soon, administration of India declared plans to give extra Rs 15000 crore money to open division banks which would build their ability to loan by Rs 185000 crore when the aggregate CRR is worth about Rs 300,000 crore, this move of the legislature viably implies, diminishing CRR by two third.

The cash reserve ratio (CRR) remains a great instrument of financial approach in India and in addition in a large portion of the creating economies. It not just appropriates liquidity at the first occasion yet in addition specifically impacts banks' cost of raising assets since a segment of store assembly is constantly appropriated by the national bank.

Hold necessities are particularly successful in creating economies, as their money related markets are not develop enough for open market activities. As per the approach of impartial cash, if the cash is profited supply is kept consistent, there will be no aggravations in the monetary framework. In such circumstance, relative costs will change as per the adjustments in the request and supply of products and ventures, financial assets will be apportioned by the needs of the society and there will be no expansion and contraction.

Recommendations

1. There should be a *Technical Advisory Committee on Credit or Monetary Strategy*. This must have specialists from across the nations to audit macroeconomic and fiscal improvements and to prompt the Reserve Bank on the position of money related arrangement.
2. The Reserve bank of India alongside Government ought to organize the mindfulness program every year on the preparing activities.
3. The conventional keeping money capacities would offer path to a framework equipped to meet all the money related requirements of the client. We could see rise of exceptionally changed budgetary items, which are customized to address particular issues of the clients in the retail and in addition corporate fragments. The approach of new innovations could see the development of new monetary players doing budgetary intermediation. For instance, we could see utility specialist organizations advertising say, charge instalment administrations or

general stores or retailers doing fundamental loaning tasks. The regular meaning of managing an account may experience changes.

4. One of the worries is nature of bank loans. Most noteworthy test before banks is the upkeep of thorough credit benchmarks, particularly in a domain of expanded rivalry for new and existing customers. Experience has demonstrated that the most noticeably bad advances are regularly made in the best of times. Pay through exchanging picks up wouldn't bolster the banks until the end of time.

5. Substantial scale endeavors are expected to overhaul aptitudes in credit chance estimating, controlling and observing as likewise patch up working methods. Credit assessment may need to move from income based investigation to "borrower account conduct", with the goal that the condition of availability of Indian banks for Basle II administration moves forward. Banks will rival each other to give esteem added administrations to their clients.

6. Structure and proprietorship example would experience changes. There would be more prominent nearness of worldwide players in the Indian money related framework. So also, a portion of the Indian banks would end up worldwide players. Government is finding a way to diminish its possessions in Public segment banks to 33%. Anyway the signs are that their PSB character may in any case be held.

7. Corporate administration in banks and money related foundations would accept more prominent significance in the coming years and this will be reflected in the structure of the Boards of Banks.

8. Bank assurance is making up for lost time and Banks/Financial Institutions have begun entering protection business. From simple offering of protection items through system of bank branches, the business is probably going to grow through self-planned protection items after important administrative changes. This could prompt a spurt in expense based wage of the banks. Managing an account and protection parts are blasting. While the private and remote banks are giving firm yet sound rivalry to people in general segment banks, bringing about general enhancements in the managing an account benefits in the nation, the protection part has additionally seen change. The purchaser is a gainer with the accessibility of much better and enhanced protection items.

9. The cash supply will likewise be changed to kill the essential changes in the financial structure of the nation. Such essential changes will be changes in populace, changes in the strategies of generation developments and so forth.

10. With the developing globalization and incorporation of economies, fiscal specialists are presently required to give careful consideration to outer advancements. Swings in exchange streams and particularly capital streams are very normal and these confer a high level of unpredictability to trade rates.

11. RBI's strategy ought to manage the sup-employ of cash. It is conceivable that the change in cash supply causes disequilibrium and the money related approach ought to kill it. Be that as it may this goal of a fiscal arrangement is constantly censured on the ground that if cash supply is kept consistent then it is hard to achieve value security.

12. Money related approach is made by the RBI while the monetary arrangement by the legislature. Both of them should be dealt with autonomously and henceforth it brings about the absence of coordination which at last damages the financial strategy of the nation.

13. Consequently, if India needs to push its development around its potential without inflationary trends, it will require massive interests in supply to coordinate the rising interest.

14. The focal components of this agreement are that the instrument of money related approach should be the fleeting financing cost, that approach ought to be centered around the control of swelling, and that swelling can be diminished by expanding here and now loan fees.

15. Because of the quick development of the economy a substantial number of NBFC's have expanded. They try not to go under the effect of fiscal strategy and in this manner can prevent the viable execution of money related strategy.

REFERENCES

- Ingale, Pallavi. (2012). A Study of Impact of RBI policy rates on inflation. *International Journal of Research in Finance & Marketing*. Volume 2, Issue 2 (February, 2012) (ISSN 2231-4334)
- Angelini, P. and Lippi, F. (2007), Did prices really soar after the Euro cash changeover? Evidence from ATM withdrawals, *International Journal of Central Banking*, 3(4): 1-22.
- Banerjee, R. and Bhattacharya, S. (2008), The RBI's Monetary Policy Reaction Function: Does Monetary Policy in India Follow an Inflation Targeting Rule?, available at: www.igidr.ac.in/money/mfc_10/Saugataev1_8Jan08.pdf
- Barro, R.J. and Gordon, D. (1983), Rules, discretion and reputation in a model of monetary policy, *Journal of Monetary Economics*, 12 (1): 101-21.
- BIS (2001), Comparing Monetary Policy Operating Procedures Across the United States, Japan and the Euro Area, available at: www.bis.org/publ/bppdf/bispap09.pdf
- Monetary policy; science or art?, paper presented at Monetary Policy: A Journey from Theory to Practice. An ECB Colloquium Held in Honor of Otmar Issing, Frankfurt am Main,
- March. Callen, T. and Chang, D. (1999), Modeling and forecasting inflation in India, IMF Working Papers 99/119, IMF, Washington, DC.
- Cavoli, T. and Rajan, R. (2008), Open economy inflation targeting arrangements and monetary policy rules: application to India, *Indian Growth and Development Review*, 1:237-51.
- Claus, E. and Dungey, M. (2006), Yield curve responses to monetary policy in the presence of asymmetric information, *Business*, November, 1-45
- . De Carvalho Filho, I. (2011), 28 months later: how inflation targeters outperformed their peers in the great recession, available at: <http://ideas.repec.org/p/pramprapa/29100.html> De Mello, L. (Ed.) (2007), *Monetary Policies and Inflation Targeting in Emerging Economies*, OECD, Paris.

- Eichengreen, B., Masson, P., Savastano, M. and Sharma, S. (1999), Transition strategies and nominal anchors on the road to greater exchange-rate flexibility, Princeton Essays in International Economics (213) International Economics Section, Department of Economics Princeton University, available at: <http://ideas.repec.org/p/fth/priifi/213.html> Ellingsen, T. and Soderstrom, U. (2001), Monetary policy and market interest rates, American Economic Review, 91(5), 1594-607. Erceg, C.J. and Levin, A. (2003), Imperfect credibility and inflation persistence, Technical Report 4, available at: <http://ideas.repec.org/a/eee/moneco/v50y2003i4p915-944.html>
- Fischer, S. and Modigliani, F. (1978), Towards an understanding of the real effects and costs of inflation, Review of World Economics, 114, 810-33.
- Gurkaynak, R.S., Levin, A. and Swanson, E. (2006), Does inflation targeting anchor long-run inflation expectations? Evidence from long-term bond yields in the US, UK and Sweden, CEPR Discussion Papers 5808, CEPR Discussion Papers, available at: <http://ideas.repec.org/p/cpr/ceprdp/5808.html>
- Gurkaynak, R.S., Levin, A. and Swanson, E. (2010), Does inflation targeting anchor long-run inflation expectations? Evidence from the US, UK, and Sweden, Journal of the European Economic Association, Vol. 8 No. 6, pp. 1208-42.
- IMF (2005), Does inflation targeting work in emerging markets, World Economic Outlook, Technical Report, Chapter 4. Vol. 4, IMF, Washington, DC, October. IMF (2010), Staff Report for the 2010 Article IV Consultation, Technical Report,
- IMF, Washington, DC. Mishkin, F.S. (2011), Monetary Policy Strategy: Lessons from the Crisis, Technical Report, National Bureau of Economic Research, available at: <http://ideas.repec.org/p/nbr/nberwo/16755.html>
- Mohan, R. (2008), Monetary policy transmission in India, BIS Working Paper No. (35), available at: www.bis.org/publ/bppdf/bispap35.pdf Orphanides, A. and Williams, J.C. (2004), Imperfect knowledge, inflation expectations, and monetary policy, The Inflation-targeting Debate, National Bureau of Economic Research, 201-46, available at: <http://econpapers.repec.org/RePEc:nbr:nberch:9559>.

- Patnaik, I., Shah, A. and Veronese, G. (2011), How should inflation be measured in India?, Economic and Political Weekly, Vol. XLVI No. 16, 55-640.
- Patra, M.D. and Kapur, M.A. (2010), A monetary policy model without money for India, 94 (830), available at: www.imf.org/external/pubs/ft/wp/2010/wp10183.pdf
- Rajan, R. (2008), Report of the Committee on Financial Sector Reforms, available at: http://planningcommission.nic.in/reports/genrep/index.php?repts¼report_fr.htm
- RBI (2009), Report of the Working Group on Surveys, Technical Report, Reserve Bank of India, Mumbai, available at: www.rbi.org.in/scripts/PublicationReportDetails.aspx?UrlPage¼ &ID¼455731
- RBI (2010a), Macroeconomic and Monetary Developments in the First Quarter of (2010-11), Technical Report, Reserve Bank of India, Mumbai, available at: www.rbi.org.in/scripts/BS_PressReleaseDisplay.aspx?prid¼422877
- RBI (2010b), Reserve Bank of India: Functions and Working, Technical Report, Reserve Bank of India, Mumbai, available at: <http://rbidocs.rbi.org.in/rdocs/Content/PDFs/FUNCWWE080910.pdf>
- RBI (2010 a), Macroeconomic and Monetary Developments in the First Quarter of (2010-11), Technical Report, Reserve Bank of India, Mumbai, retrieved from: www.rbi.org.in/scripts/BS.
- Report of the Working Group on Operating Procedure of Monetary Policy, Technical Report, Reserve Bank of India, Mumbai, retrieved from: <http://rbidocs.rbi.org.in/rdocs/ReportoftheWorkingGrouponOperatingProcedureofMonetaryPolicy.pdf>
- RBI (2011). Technical Report, Reserve Bank of India, Mumbai, available at: http://rbi.org.in/scripts/bs_viewcontent.aspx?Id¼42351
- Singh, B. (2010). Monetary Policy Behaviour in India: Evidence from Taylor-type Policy Frameworks, Technical Report, Reserve Bank of India, Mumbai, retrieved from : www.rbi.org.in/scripts/PublicationReportDetails.aspx?UrlPage¼&ID¼4590
- Subbarao, D. (2010). Financial crisis – some old questions and maybe some new answers, Tenth C.D. Deshmukh Memorial Lecture delivered at Council for Social Development, Southern Regional Centre, Hyderabad, retrieved from : www.rbi.org.in/scripts/BS_SpeechesView.aspx?Id¼4515.